

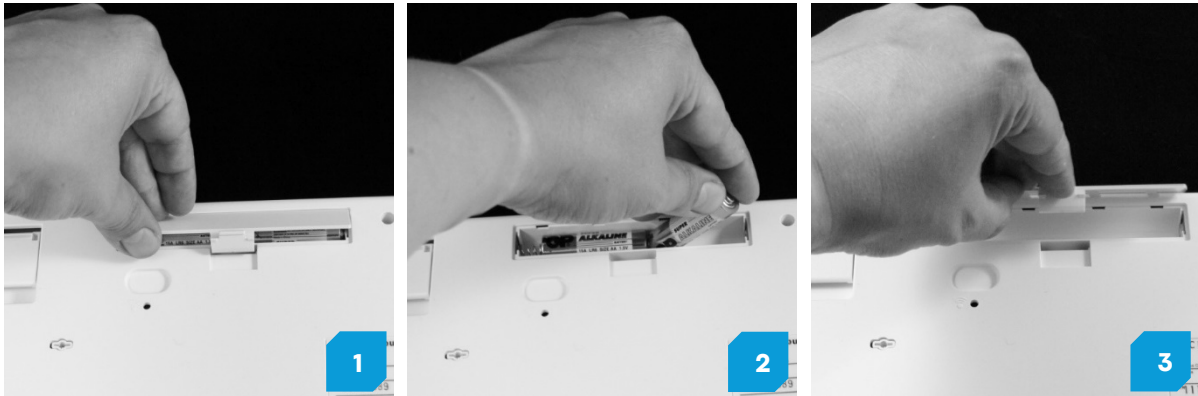


# Clevy Keyboard – User Manual

Revision 2022

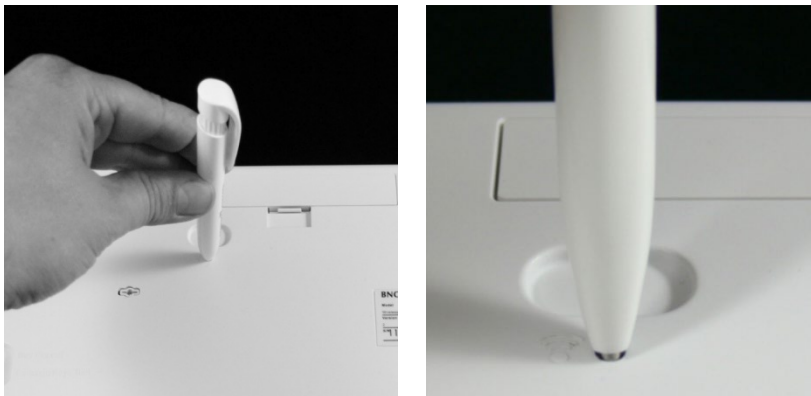
## Batteries

Two AA batteries are required to power the keyboard.



## Bluetooth pairing

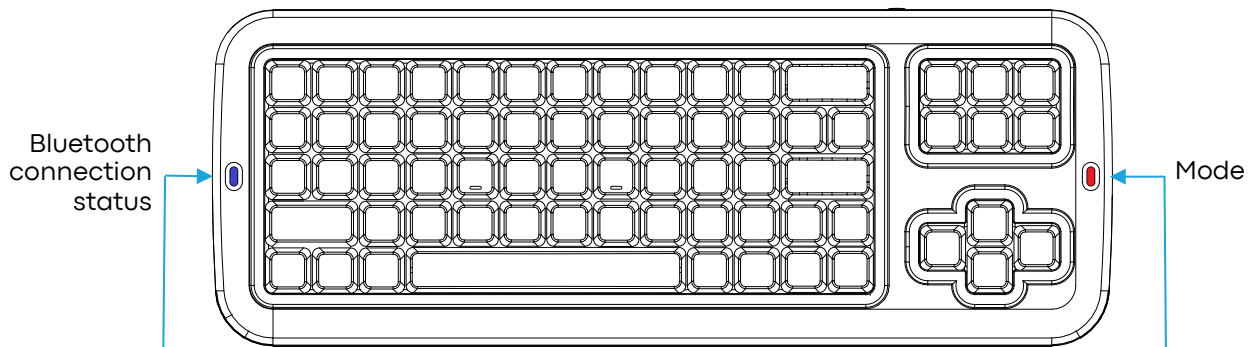
Go to the Bluetooth® preferences of your computer and search for devices. Then briefly press the button on the rear side of the keyboard with a pen or any other pointy object.



The device “Clevy Bluetooth Keyboard” should appear on your device. Activate it and start using it after following the steps suggested by your operating system.

## Led Lights

There are two led lights on the Clevy Keyboard. One on the left (blue) and one on the right (red). The light on the left hand side indicates the Bluetooth connection status. The light on the right hand side indicates the modes.



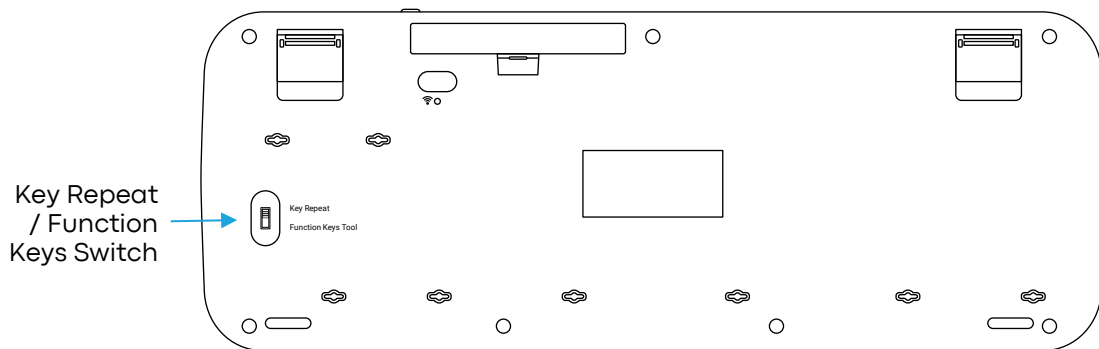
LED	Keyboard Status
Continuous blinking	BT pairing or discovery mode
Blinks once every 5 seconds	BT paired and active
Off	Sleeping mode

LED	Keyboard Status
On	Low power
Blinks once	Key becomes sticky
Blinks twice	Enter in iPad mode
Blinks three times	Enter in Computer mode

**Note:** In standby mode all LED's are switched off.

## Key Repeat / Function Keys switch

On the backside of the keyboard there is a switch. Here you can choose between two options:



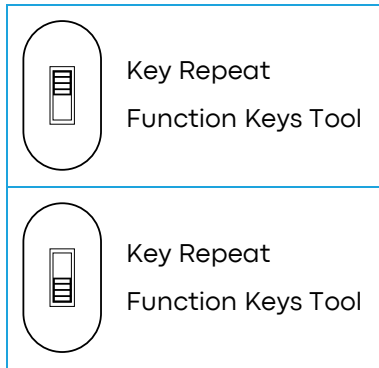
### Key Repeat

The repetition of a character when the user holds down a key representing that character.

### Function Keys Tool

When you press and hold one of the following keys "F/ALT/AltGr/CTRL/SHIFT/Windows/Apple" for more than 2 seconds on the keyboard, the key is locked. You can then press another key to create a combination of keys. For example pressing ALT for 2 seconds, then pressing "F" for 2 seconds and finally press "4" will result in the "ALT+F4" command.

Note: If a key is locked, type on it again to unlock it.



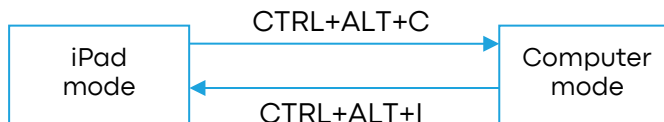
Key Repeat **ON** / Function Key Tool **OFF**

Key Repeat **OFF** / Function Key Tool **ON**

## iPad / Computer modes

The default mode of the keyboard is "Computer mode" this mode works for every device including iPads. To toggle the mode press CTRL-ALT-I for "iPad mode" and CTRL-ALT-C for "Computer mode". When in iPad mode the user can access special features developed for iPad.

Please note that a battery change will reset the mode to the default "Computer mode".



### iPad mode

This mode features 2 shortcuts customized for iPad:

- / Home = **ALT+CTRL+H**
- / AltGr = **LEFT+RIGHT**

### Computer mode

This mode is similar to typical keyboards.

If you have any other questions, please have a look here: [www.clevy.com/faq](http://www.clevy.com/faq), or contact us at the following email address: [info@altproducts.nl](mailto:info@altproducts.nl).

## Federal Communications Commission (FCC) Statement

You are cautioned that changes or modifications not expressly approved by the part responsible for compliance could void the user's authority to operate the equipment.

This equipment has been tested and found to comply with the limits for a Class B digital device, pursuant to part 15 of the FCC rules. These limits are designed to provide reasonable protection against harmful interference in a residential installation. This equipment generates, uses and can radiate radio frequency energy and, if not installed and used in accordance with the instructions, may cause harmful interference to radio communications. However, there is no guarantee that interference will not occur in a particular installation. If this equipment does cause harmful interference to radio or television reception, which can be determined by turning the equipment off and on, the user is encouraged to try to correct the interference by one or more of the following measures:

- / Reorient or relocate the receiving antenna.
- / Increase the separation between the equipment and receiver.
- / Connect the equipment into an outlet on a circuit different from that to which the receiver is connected.
- / Consult the dealer or an experienced radio/TV technician for help.



**This device complies with Part 15 of the FCC Rules. Operation is subject to the following two conditions:**

1. This device may not cause harmful interference, and
2. This device must accept any interference received, including interference that may cause undesired operation of the device.

**FCC RF Radiation Exposure Statement:**

3. This Transmitter must not be co-located or operating in conjunction with any other antenna or transmitter.
4. This equipment complies with FCC RF radiation exposure limits set forth for an uncontrolled environment. This equipment should be installed and operated with a minimum distance of 0.5 centimeters between the radiator and your body.

SAR information: 0.245 W/kg (1g)